

MODULE 5 ENVIRONMENTAL PORTFOLIO WATER RESOURCE ASSESSMENT

**STONE MOUNTAIN, GA
VALENA SPENCER
GEOS 6097**

GSU SUMMER 2020



POPULATION

Field Area

- **Stone Mountain, GA - 6281**

Atlanta, GA- 506,811

Memphis, TN- 651,073

Baton Rouge, LA- 220,236

Sacramento, CA- 513,624

[census.gov](https://www.census.gov)

PREDICTED TOTAL POPULATION WATER USE FOR EACH CITY, ASSUMING EACH PERSON USES 100 GALLONS PER DAY (0.00015 CUBIC FEET PER SECOND).

City	Population	Water usage
Stone Mountain, GA	6281	0.94212 cubic ft/sec
Atlanta, GA	506,811	76.02165 cubic ft/sec
Memphis, TN	651,073	97.66095 cubic ft/sec
Baton Rouge, LA	220,236	33.0354 cubic ft/sec
Sacramento, CA	513,624	77.0436 cubic ft/sec



CHATTAHOOCHEE RIVER

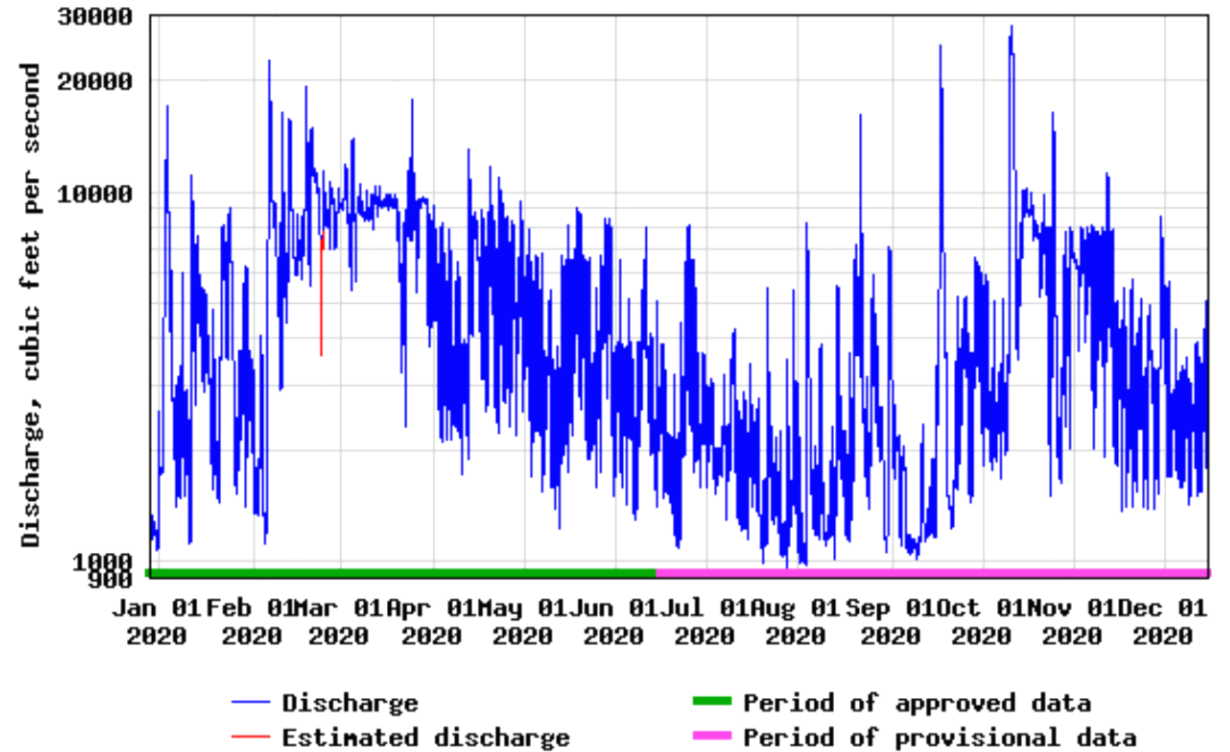
STONE MOUNTAIN AND ATLANTA

- 434 MILES LONG
- HIGHEST DISCHARGE: 29,000 CUBIC FT/SEC
- LOWEST DISCHARGE: 900 CUBIC FT/SEC

Discharge, cubic feet per second

Most recent instantaneous value: 3670 12-15-2020 21:00 EST

USGS 02336490 CHATTAHOOCHEE RIVER AT GA 280, NEAR ATLANTA, GA



MISSISSIPPI RIVER

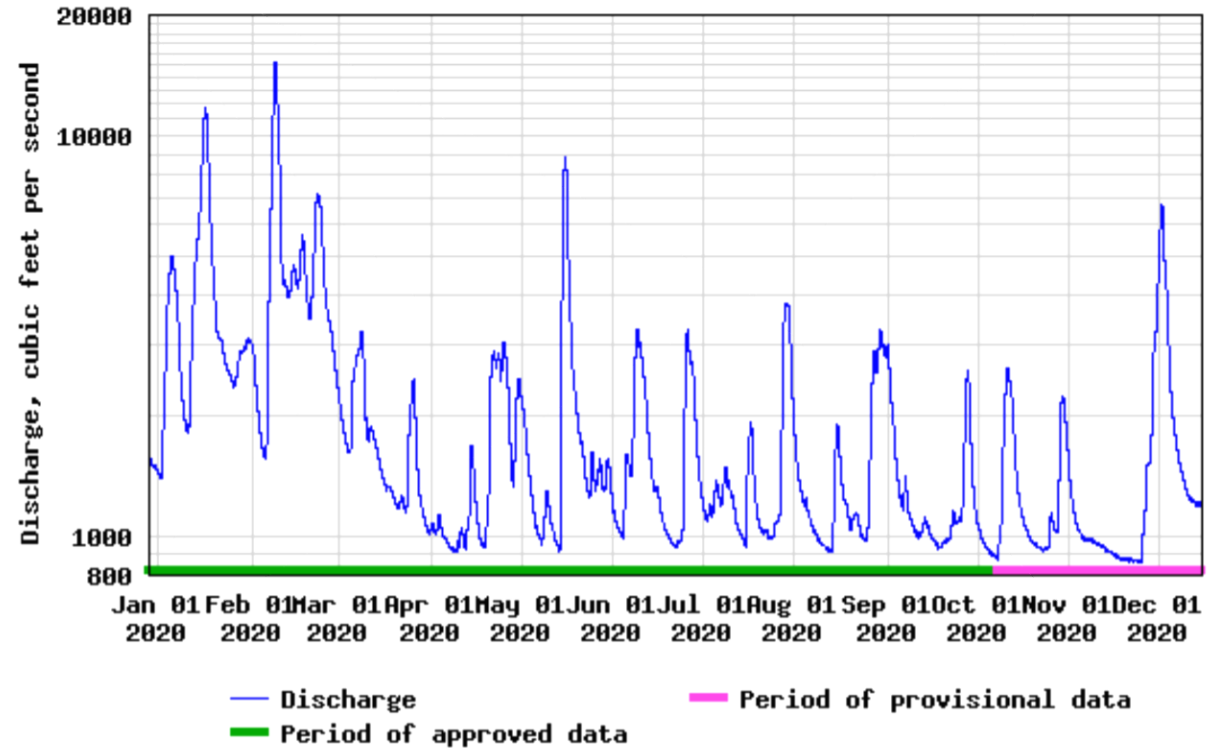
BATON ROUGE, LA

- 2,348 MILES LONG
- **HIGHEST DISCHARGE** : 15,000 CUBIC FT/SEC
- **LOWEST DISCHARGE** : 800 CUBIC FT/SEC

Discharge, cubic feet per second

Most recent instantaneous value: 1200 12-15-2020 20:00 CST

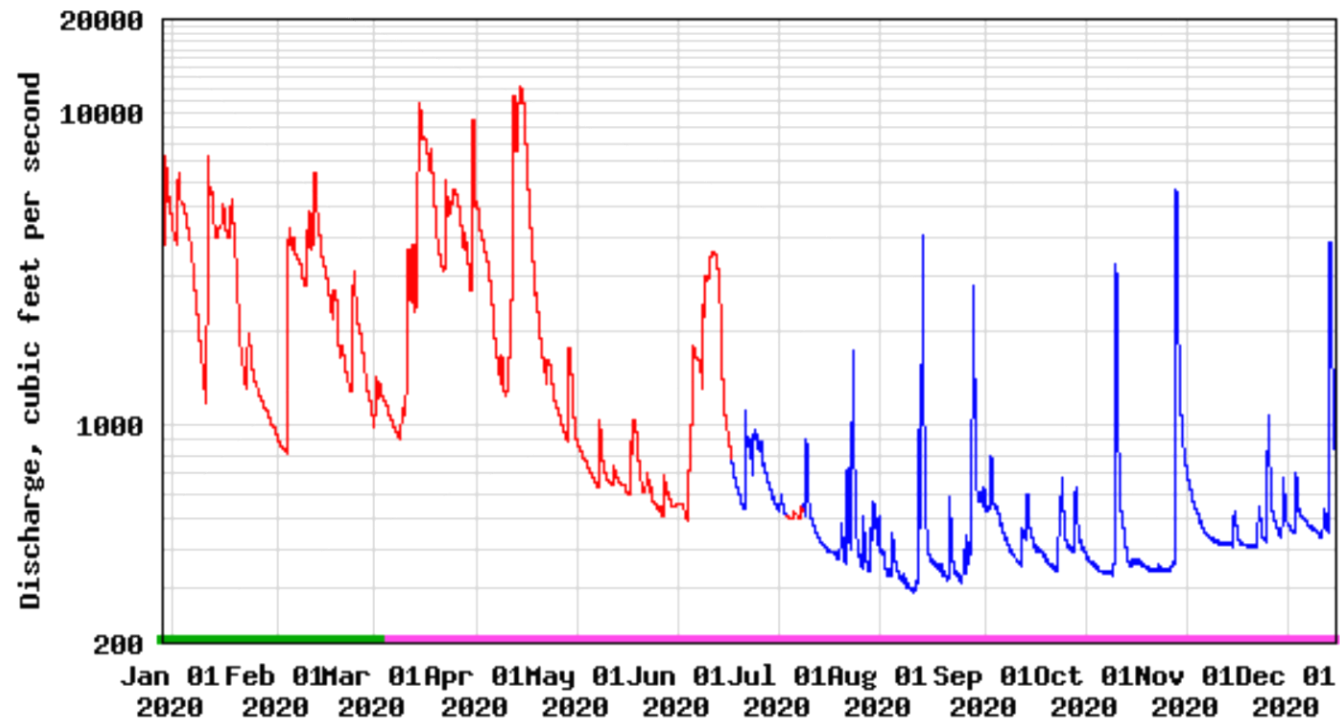
USGS 02492000 Bogue Chitto River near Bush, LA



Discharge, cubic feet per second

Most recent instantaneous value: 771 12-15-2020 21:00 CST

USGS 07031740 WOLF RIVER AT HOLLYWOOD ST AT MEMPHIS, TN



MISSISSIPPI RIVER MEMPHIS, TN

- 2,348 MILES LONG
- **HIGHEST DISCHARGE** : 14,000 CUBIC FEET PER SECOND
- **LOWEST DISCHARGE** : 300 CUBIC FEET PER SECOND

SACRAMENTO RIVER SACRAMENTO, CA

- 400 MILES LONG
- HIGHEST DISCHARGE: 120,000 CUBIC FT/SEC
- LOWEST DISCHARGE: -125,000 CUBIC FT/SEC (NEGATIVE)
- WATER USAGE IS 77.0436 CUBIC FT/SEC

WATERDATA.USGS.GOV

Discharge, cubic feet per second

Most recent instantaneous value: 113000 12-15-2020 18:45 PST

USGS 11455420 SACRAMENTO R A RIO VISTA CA

